

Firmware Upgrade Manual

Use this software on a personal computer to update the firmware of the FT-991A transceiver after connecting it to the personal computer.

Important

Before downloading this software, please read the "Important Notes" carefully.

Downloading or installing this software will signify your agreement with the stipulations of the "Important Notes".

"Transceiver" is used hereafter to refer to the YAESU FT-991A transceiver.

(This firmware is not compatible with the FT-991 transceiver)

CAUTION!

*Be sure to confirm the model and the version of your transceiver before starting the update.
Writing incorrect firmware to the transceiver may cause abnormal operation or failure.*

Important Notes

- All responsibility for the use of this software lies with the customer. Yaesu Musen Co., LTD cannot be held responsible in any way for damage or loss which may be incurred by the customer as a result of using this software.
- Copyrights and all other intellectual property rights for the software, as well as the software manual, are the property of YAESU MUSEN CO., LTD.
- The revision, modification, reverse engineering, and decompiling of this software is prohibited. Redistribution, transfer, and resale of downloaded files are also prohibited.
- Downloaded files are for personal use only.
- If you cannot perform the firmware update yourself, please consult with one of our sales sites or service centers.

CAUTION!

*The transceiver needs all settings to be reset immediately after updating the firmware.
Resetting the transceiver will clear all memories.
Please make a note of the memories (memory channel settings, etc) before updating firmware.*

System Requirements (Operating Environment)

Supported Operating Systems

- Microsoft® Windows® 11
- Microsoft® Windows® 10
- Microsoft® Windows® 8.1

※ To upgrade the TFT Firmware on your FT-991A, you must first install "Microsoft .NET Framework 3.5.x" onto the personal computer before beginning the firmware upgrade process.

CPU

CPU which satisfies OS (operating system) requirements

RAM (System Memory)

Sufficient RAM (system memory) to meet or exceed the OS (operating system) requirements

HDD (Hard Disk)

HDD (hard disk) with capacity meeting or exceeding OS (operating system) requirements

In addition to having sufficient free space for the OS to operate, the program requires 20 Mbyte or more of free space.

Ports

USB port (USB1.1/USB2.0)

Do not connect the USB cable to your personal computer and FT-991A until after the "virtual COM port driver" installation is completed, because the wrong driver may be installed.

USB Driver (for Performing Version Upgrade via the USB Port)

Install the FT-991A virtual COM port driver in the personal computer before beginning the firmware upgrade process.

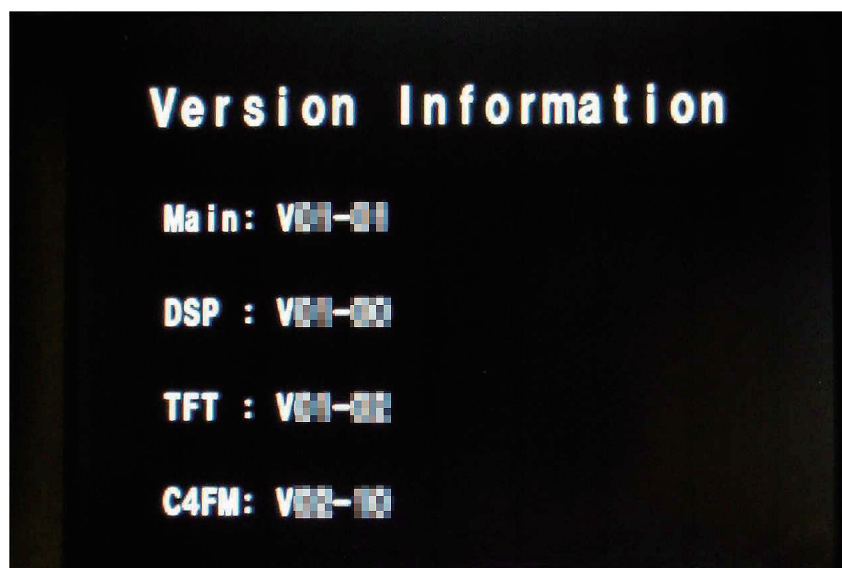
Please see the FT-991A USB Driver (Virtual COM Port Driver) on the Yaesu Website for details (<http://www.yaesu.com/>).

Cables

USB cable (AB type)

Please have a commercially available cable ready.

How to Confirm the Firmware Version



MAIN, DSP, TFT and C4FM DSP firmware are available for FT-991A transceiver. Check the firmware version, and perform firmware updates when needed.

Press and hold the [POWER] key to turn on the transceiver, while pressing and holding the [A=B] key, and [A/B] key on the transceiver's main panel.

The versions of each firmware will be displayed on the TFT screen.

Regarding this Firmware

How to Update the MAIN Firmware (see page 3)

Downloading the MAIN Firmware

[Transfer Software: YFSW024](#)

[Firmware: AH067_V****.SFL](#)

How to Update the DSP Firmware (see page 5)

Downloading the DSP Firmware

[Transfer Software: FW-DSP](#)

[Firmware: AH067_V****.dat](#)

How to Update the TFT Firmware (see page 7)

Downloading the TFT Firmware

[Transfer Software: TFW](#)

[Firmware: AH067_V**-**.bin](#)

How to Update the C4FM DSP Firmware (see page 9)

Downloading the C4FM DSP Firmware

[Update Software: PCTOOLe_v****.exe](#)

How to Update the MAIN Firmware

Preparation: Download the **YFSW024** transfer software and **AH067_V****.SFL** firmware to the same folder, and Unzip the downloaded zip file.

1. Confirm that the radio is turned off then disconnect DC cable and all other cables from the transceiver unit.
2. Connect the transceiver unit USB terminal and personal computer USB port via a standard, commercially available cable.

(The FT-991A virtual COM port driver must be installed before connecting the USB cable.)

3. Confirm that the external power supply's power is turned off, and connect the DC cable to the transceiver. While pressing and holding the [TXW] and [SPLIT] keys on the transceiver unit panel, turn on the external power supply. (Do not touch the transceiver's POWER switch.)

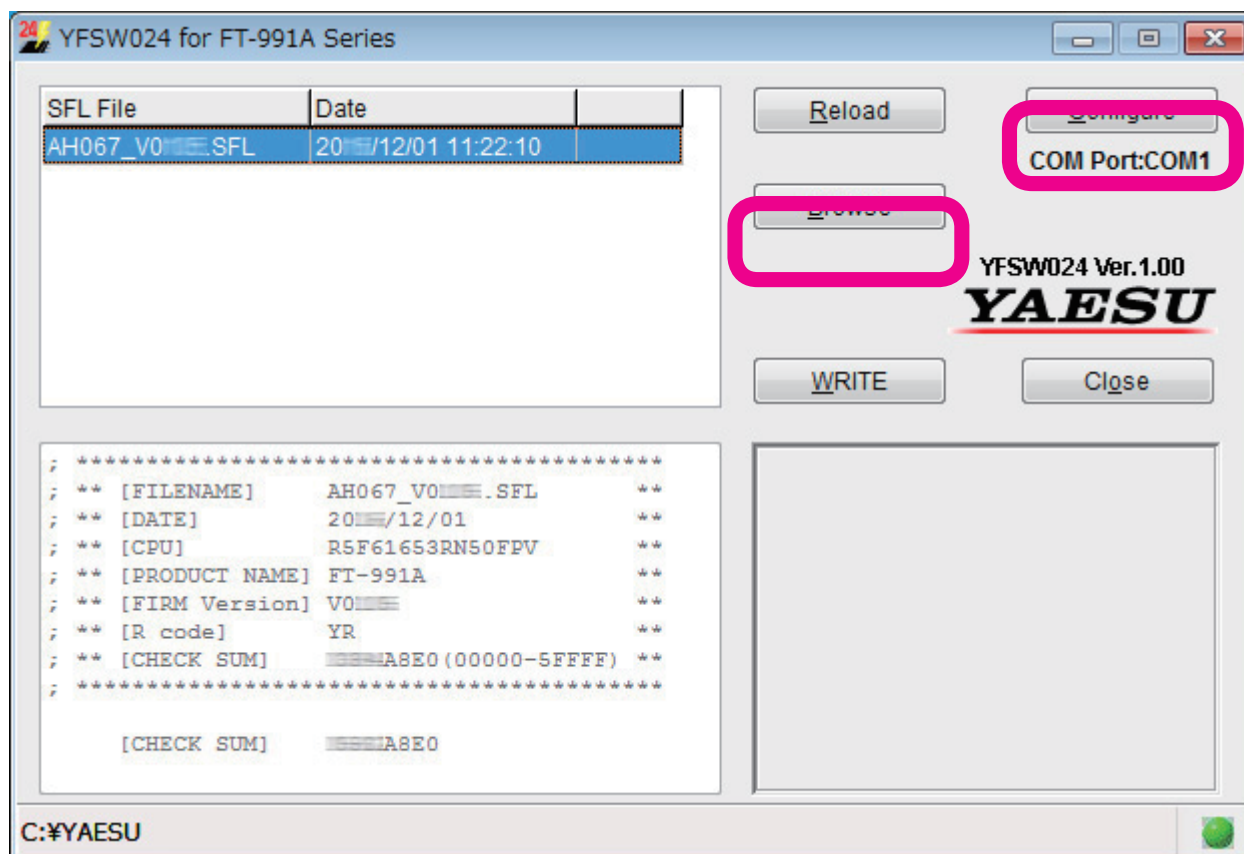
NOTE: This puts the radio into program mode and the display will be blank.

4. Execute the YFSW024.exe transfer software.

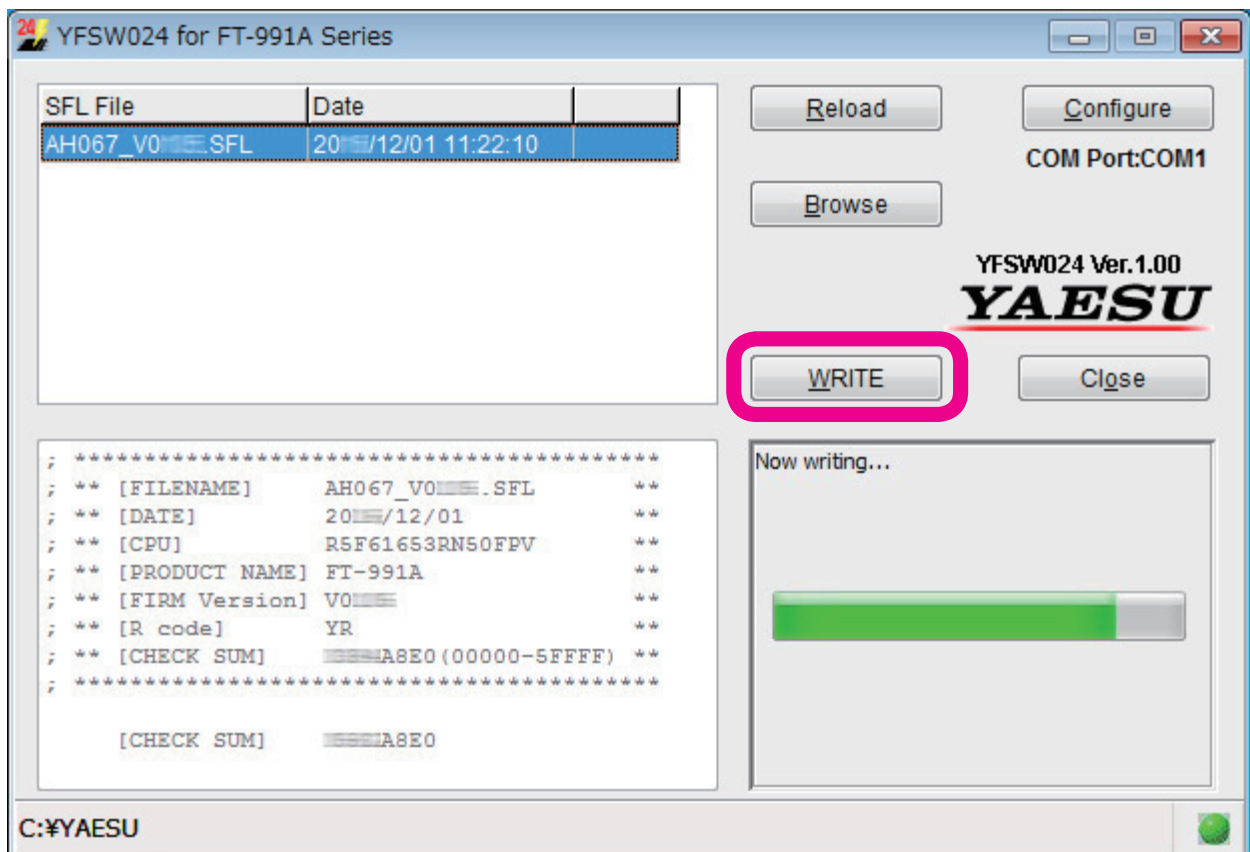
Click the "Configure" button and set the COM port number.

(Use an Enhanced COM port when using a USB cable. Please see the FT-991A Virtual COM Port Driver on the Yaesu Website for details (<http://www.yaesu.com/>).)

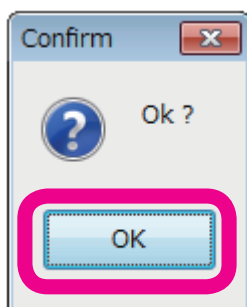
5. Click the "Browse" button on the YFSW024 transfer software screen, and select the firmware to be transferred (SFL file).



- Click the "WRITE" button on the YFSW024 transfer software screen. The firmware transfer process will begin.



Please wait until the process has been completed.
When "OK?" is displayed on-screen, the update has been completed.



- Click the "OK" button.
- Turn off the external power supply unit's power.
- Disconnect the USB cable connecting the transceiver to the personal computer.
- Turn on the external power supply unit's power.
- Press and hold the [POWER] key while pressing the [F(M-LIST)] key on the transceiver's main panel, turning on the transceiver's power (Reset procedure).
- Confirm that the unit's power has turned on, and press and hold the [POWER] to turn it OFF.
This completes the firmware upgrading process.

If there is a problem during the upgrading process, disconnect the DC cable from the transceiver, and turn off the external power supply, then close the YFSW024 transfer software, and try again.

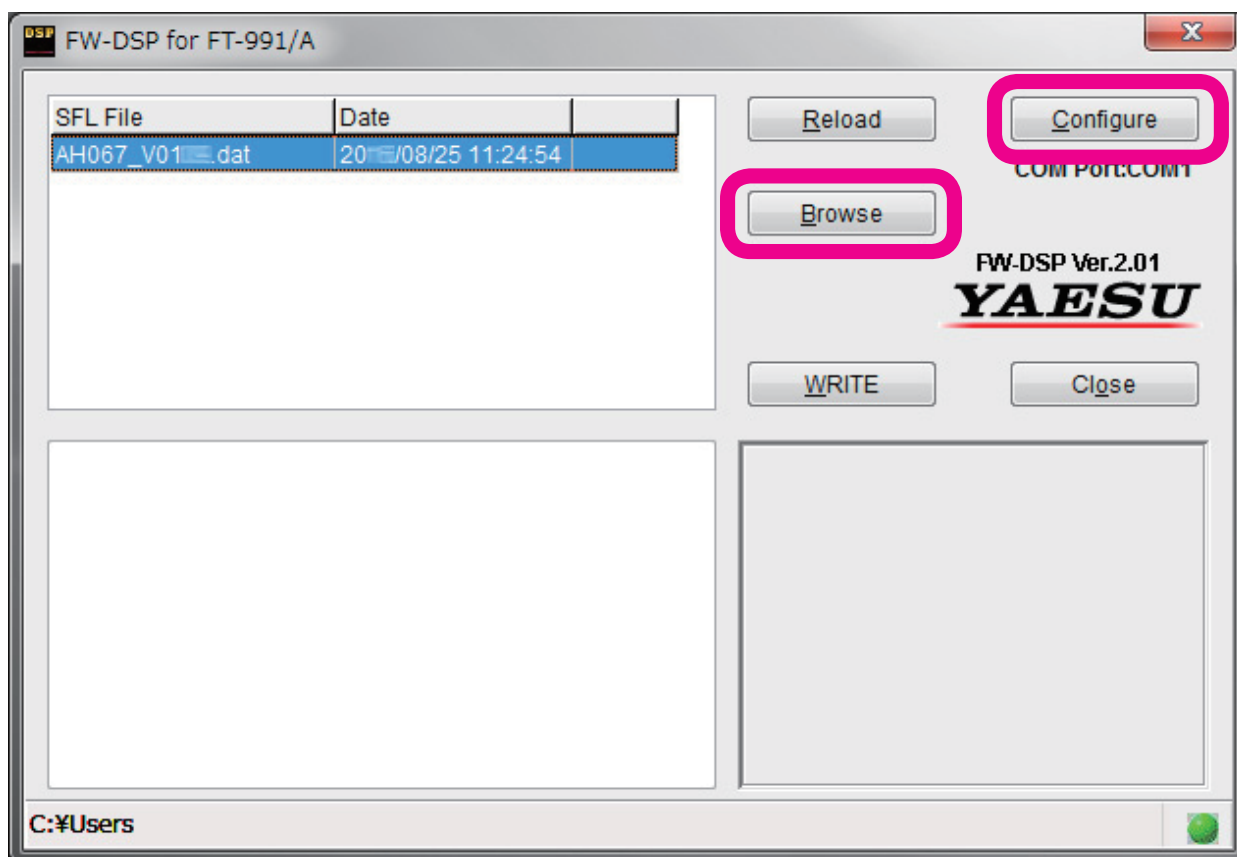
How to Update the DSP Firmware

Preparation: Download the **FW-DSP** transfer software and **AH067_V****.dat** firmware to the same folder, and Unzip the downloaded zip file.

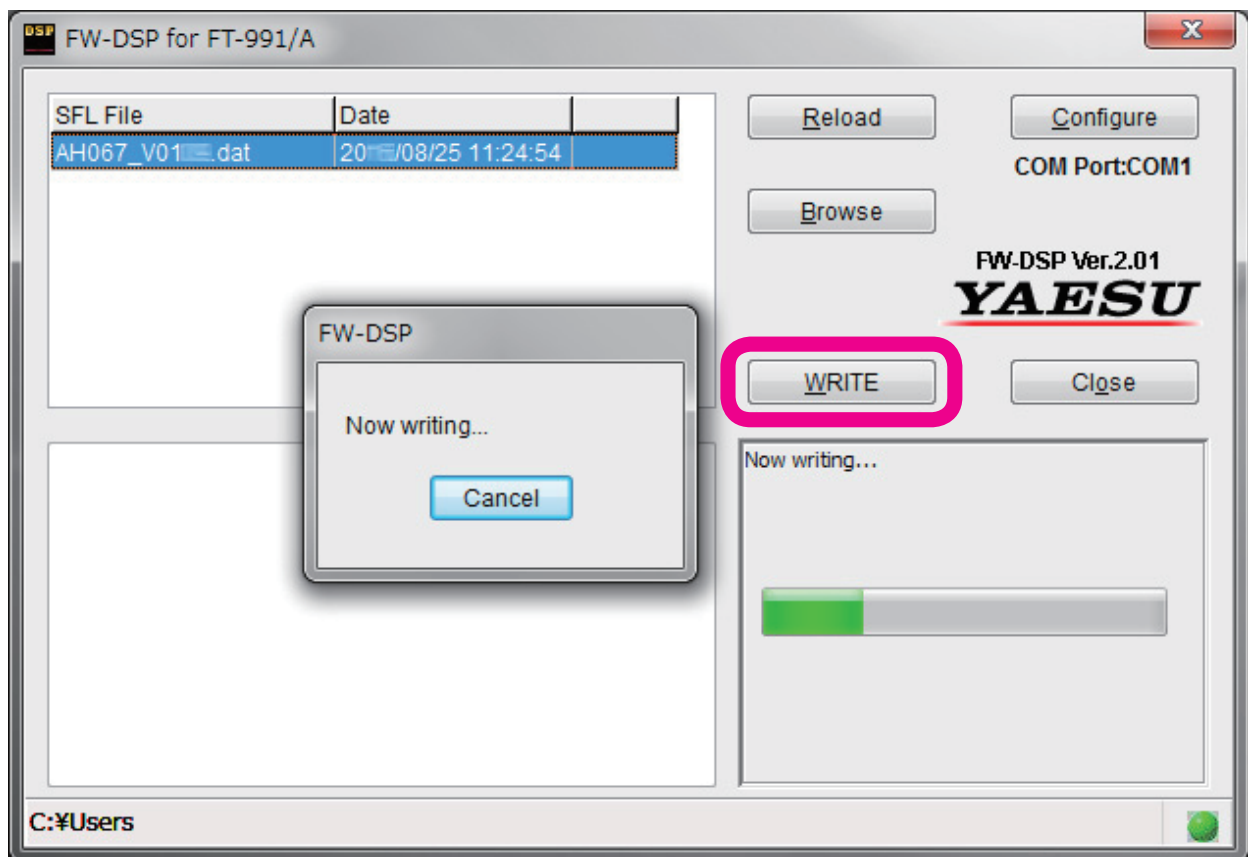
1. Confirm that the radio is turned off then disconnect DC cable and all other cables from the transceiver unit.
2. Connect the transceiver unit USB terminal and personal computer USB port via a standard, commercially available cable.
(The FT-991A virtual COM port driver must be installed before connecting the USB cable.)
3. Connect the DC cable to the transceiver, and turn the external power supply unit power ON.
Press and hold the [POWER] key while pressing the [F(M-LIST)] + [MENU(SETUP)] + [BAND] keys on the transceiver's main panel, turning on the transceiver's power.
The transceiver LED indicator will appear as below, and the unit will switch to DSP write mode.



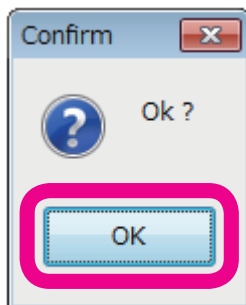
4. Execute the FW-DSP.exe transfer software.
Click the "Configure" button and set the COM port number.
(Use an Enhanced COM port when using a USB cable. Please see the FT-991A Virtual COM Port Driver for details on the Yaesu Website (<http://www.yaesu.com/>).)
5. Click the "Browse" button on-screen, select the firmware to be transferred (dat file).



6. Click the "WRITE" button on-screen. The firmware transfer process will begin.
Please wait until the process has been completed.



7. When "OK?" is displayed on-screen, the update has been completed.
8. Click the "OK" button.



9. Press and hold the [POWER] key on the transceiver's main panel, turning off the transceiver's power.
10. Click the "End" button on the transfer software screen.
11. Disconnect the USB cable connecting the transceiver to the personal computer.
This completes the firmware upgrading process.

If there is a problem during the upgrading process, disconnect the DC cable from the transceiver, and turn off the external power supply; then close the FW-DSP transfer software, and try again.

How to Update the TFT Firmware

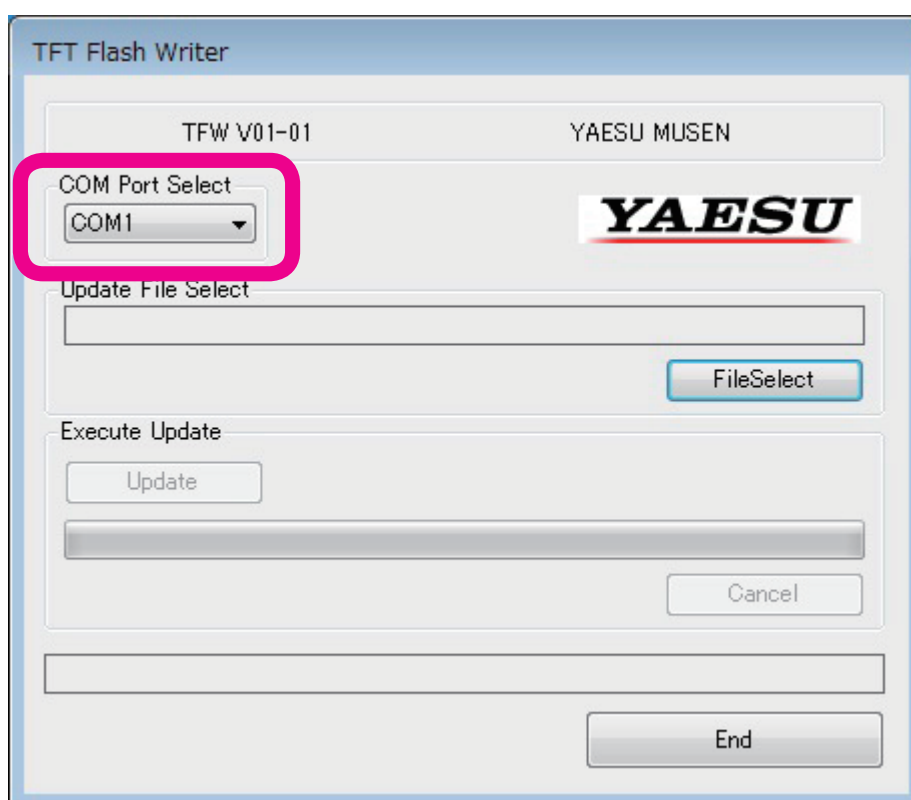
Preparation: Download the **TFW** transfer software and **AH067_V**-**.bin** firmware to the same folder, and Unzip the downloaded zip file.

※ To upgrade the TFT Firmware on your FT-991A, you must first install "Microsoft .NET Framework 3.5.x" onto the personal computer before beginning the firmware upgrade process.

1. Confirm that the radio is turned off then disconnect DC cable and all other cables from the transceiver unit.
2. Connect the transceiver unit USB terminal and personal computer USB port via a standard, commercially available cable.
(The FT-991A virtual COM port driver must be installed before connecting the USB cable.)
3. While pressing and holding the [F(M-LIST)] + [BAND] + [MODE] keys, on the transceiver main panel, press and hold the [POWER] key, to turn the power ON. The transceiver frequency display will appear as below.

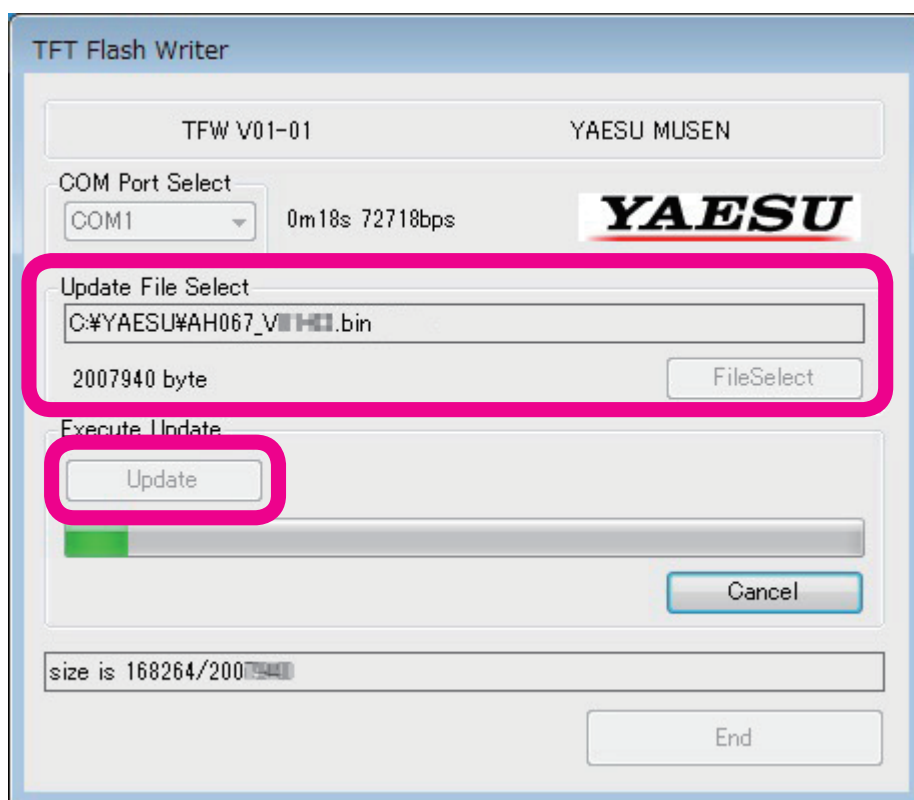


4. Execute the TFW.exe transfer software.



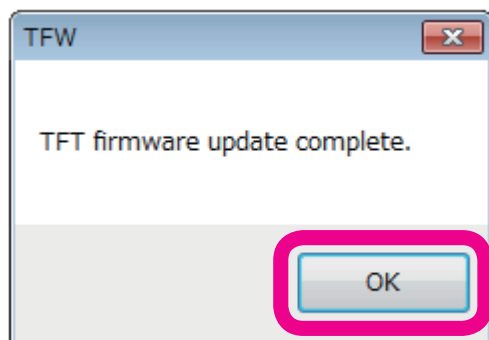
On the TFW COM Port Select screen, set the COM port number.
The COM port number may vary from computer to computer.
(Use an Enhanced COM port when using a USB cable. Please see the FT-991A Virtual COM Port Driver for details on the Yaesu Website (<http://www.yaesu.com/>).)

Click the “File Select” button, select the firmware to be transferred (bin file), and click the “Open” button. Click the “Update” button. The firmware transfer process will begin.



Please wait until the process has been completed.

“TFT firmware complete” will be displayed on-screen, as shown below.



Click the “OK” button.

6. Press and hold the [POWER] key on the transceiver's main panel, turning off the transceiver's power.
7. Click the “End” button on the transfer software screen.
8. Disconnect the USB cable connecting the transceiver to the personal computer.
This completes the firmware upgrading process.

If there is a problem during the upgrading process, disconnect the DC cable from the transceiver, and turn off the external power supply; then close the TFW transfer software, and try again.

How to Update the C4FM-DSP Firmware

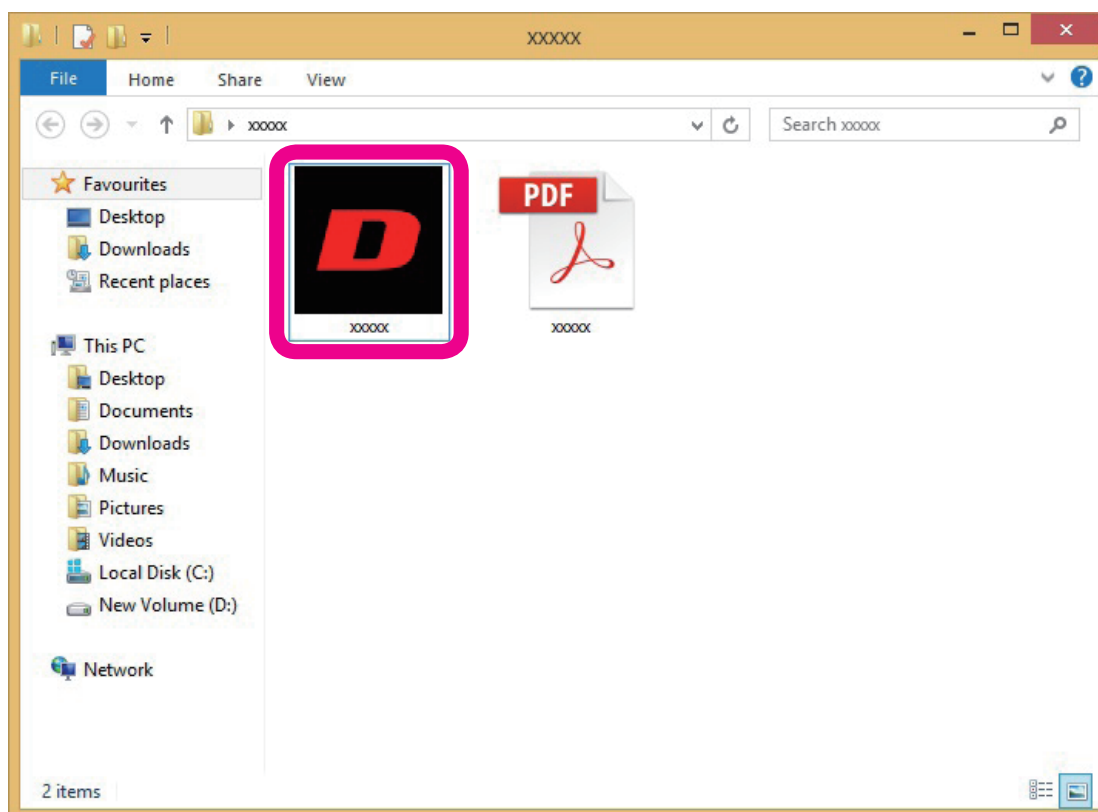
Preparation: Download the update software **PCTOOLe_vXXXX.zip**, and Unzip the downloaded zip file.

1. Confirm that the radio is turned off then disconnect DC cable and all other cables from the transceiver unit.
2. Connect the transceiver unit USB terminal and personal computer USB port via a standard, commercially available cable.
(The FT-991A virtual COM port driver must be installed before connecting the USB cable.)
3. Connect the DC cable to the transceiver, and turn the external power supply unit power ON.
While pressing and holding the [F(M-LIST)] + [MENU(SETUP)] + [MODE] keys, on the transceiver main panel, press and hold the [POWER] key, to turn the power ON. The transceiver frequency display will appear as below.



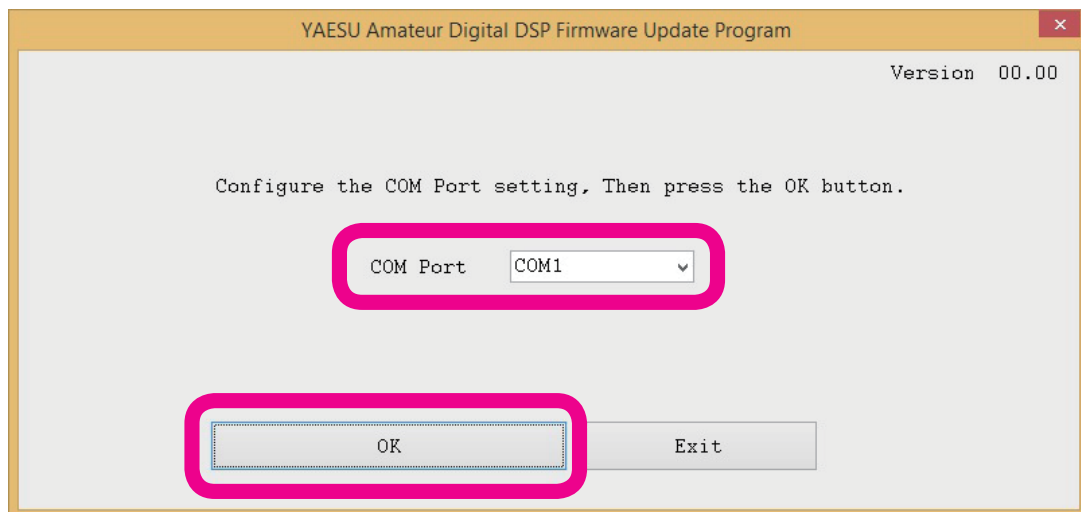
4. When decompressed, the folder will automatically open. Click on the "PCTOOLe_vXXXX.exe" (D icon)" icon in the folder to execute the update program.

* "XXXX" refers to a version number.

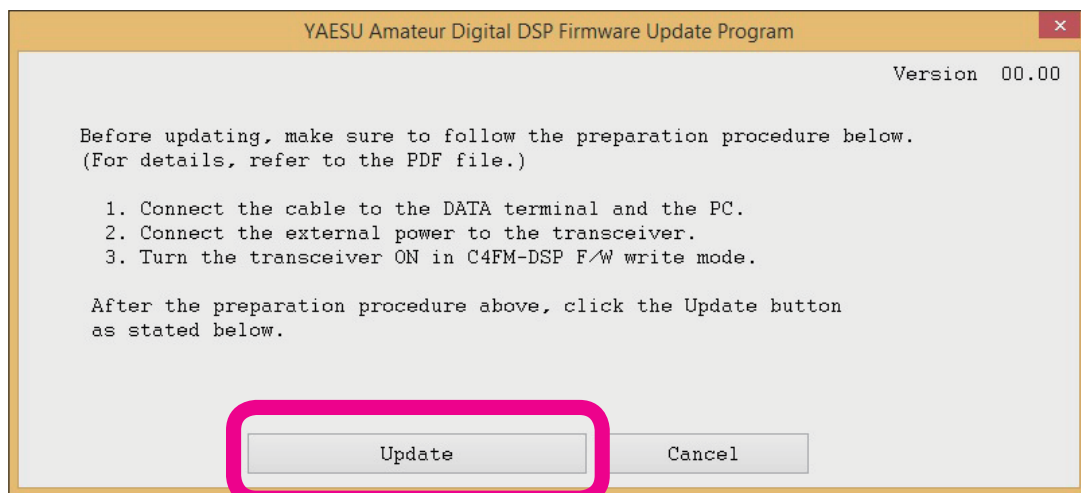


5. If the "Security Alert" screen appears, click the [Run] button.
The "YAESU Amateur Digital DSP Firmware Update Program" will open.

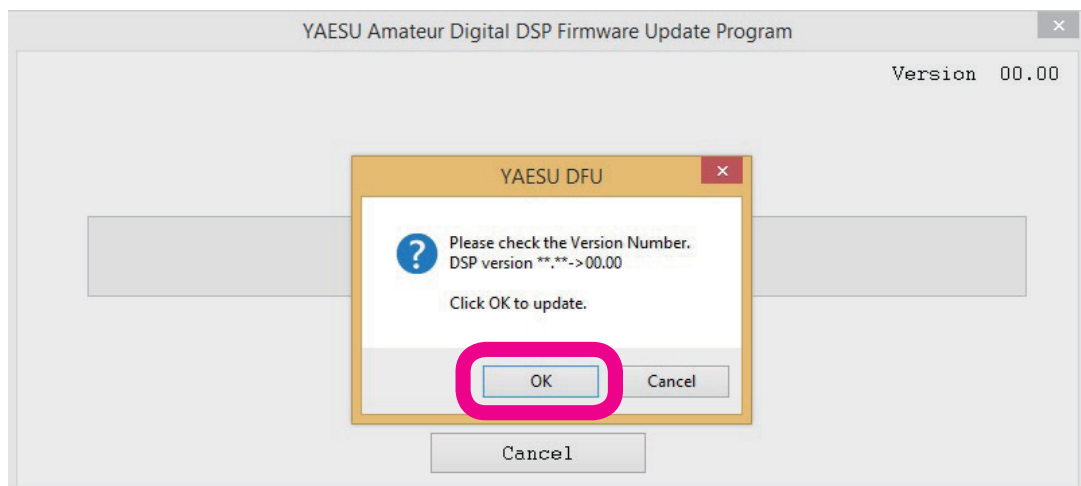
6. Set the COM Port number to the Port used in connecting the PC and FT-991A. The port number can be verified by accessing the Windows PC device manager. When "Set the COM Port " is completed, press the "OK" button to advance to the next screen (preparations prior to transferring the software).



7. Click the [Update] button.



8. When the following pop-up screen is displayed, check the Version number. And then press the "OK" button.



The update progress indicator is displayed when the firmware transfer begins.

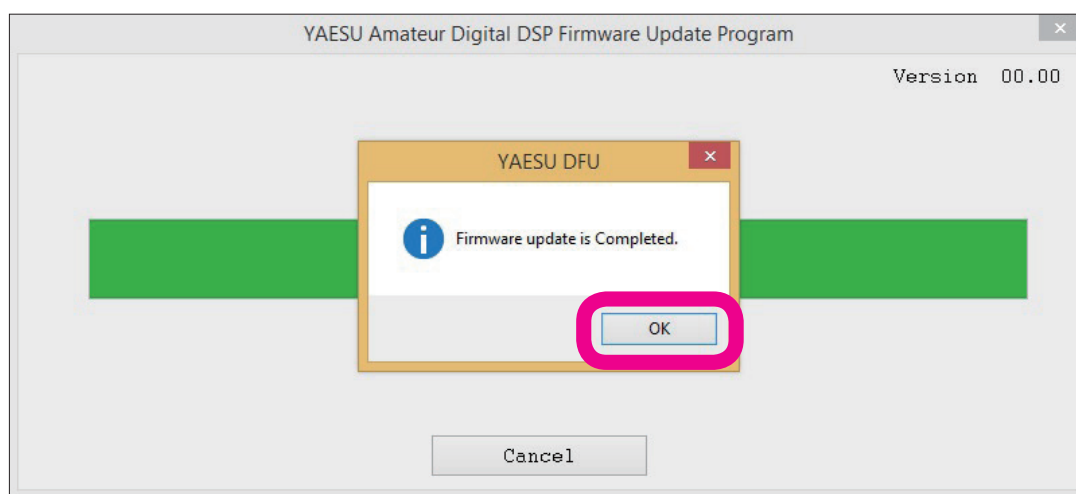
Wait for the updating to end. (The process takes about two minutes.)

CAUTION!

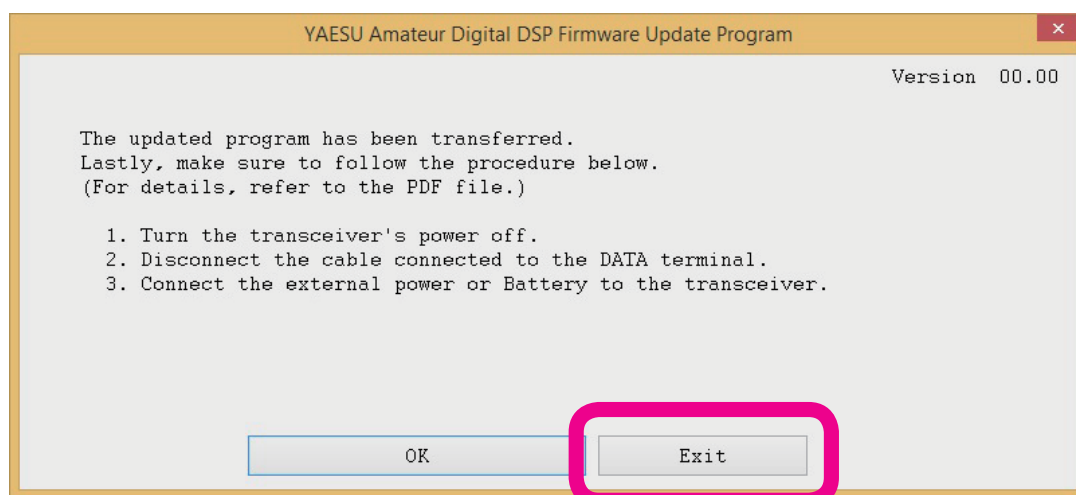
**Do not switch OFF the power supply to the PC or transceiver during the update.
The transceiver may not function normally if the firmware transfer is interrupted during the up
grade.**

**When the following pop-up screen is displayed, upon completion of the update, press the
"OK " button.**

9. When the following pop-up screen is displayed, upon completion of the update, press the "OK" button.



10. Press and hold the [POWER] key on the transceiver's main panel, turning off the transceiver's power.



11. Click the "Exit" button on the update software screen.
12. Disconnect the USB cable connecting the transceiver to the personal computer.
This completes the firmware upgrading process.

If there is a problem during the upgrading process, disconnect the DC cable from the transceiver, and turn off the external power supply; then close the update transfer software, and try again.

Microsoft®, Windows®, Windows® 8.1, Windows® 10 and Windows® 11 are registered trademarks of Microsoft Corporation in the United States and other countries.



Copyright 2024
YAESU MUSEN CO., LTD.
All rights reserved.

No portion of this manual may be
reproduced without the permission of
YAESU MUSEN CO., LTD.

YAESU MUSEN CO., LTD.

Omori Bellport Building D-3F
6-26-3 Minami-Oi, Shinagawa-ku, Tokyo, 140-0013, Japan

YAESU USA

6125 Phyllis Drive, Cypress, CA 90630, U.S.A.

YAESU UK

Unit 4, Concorde Park, Concorde Way, Segensworth North,
Fareham, Hampshire PO15 5FG, United Kingdom